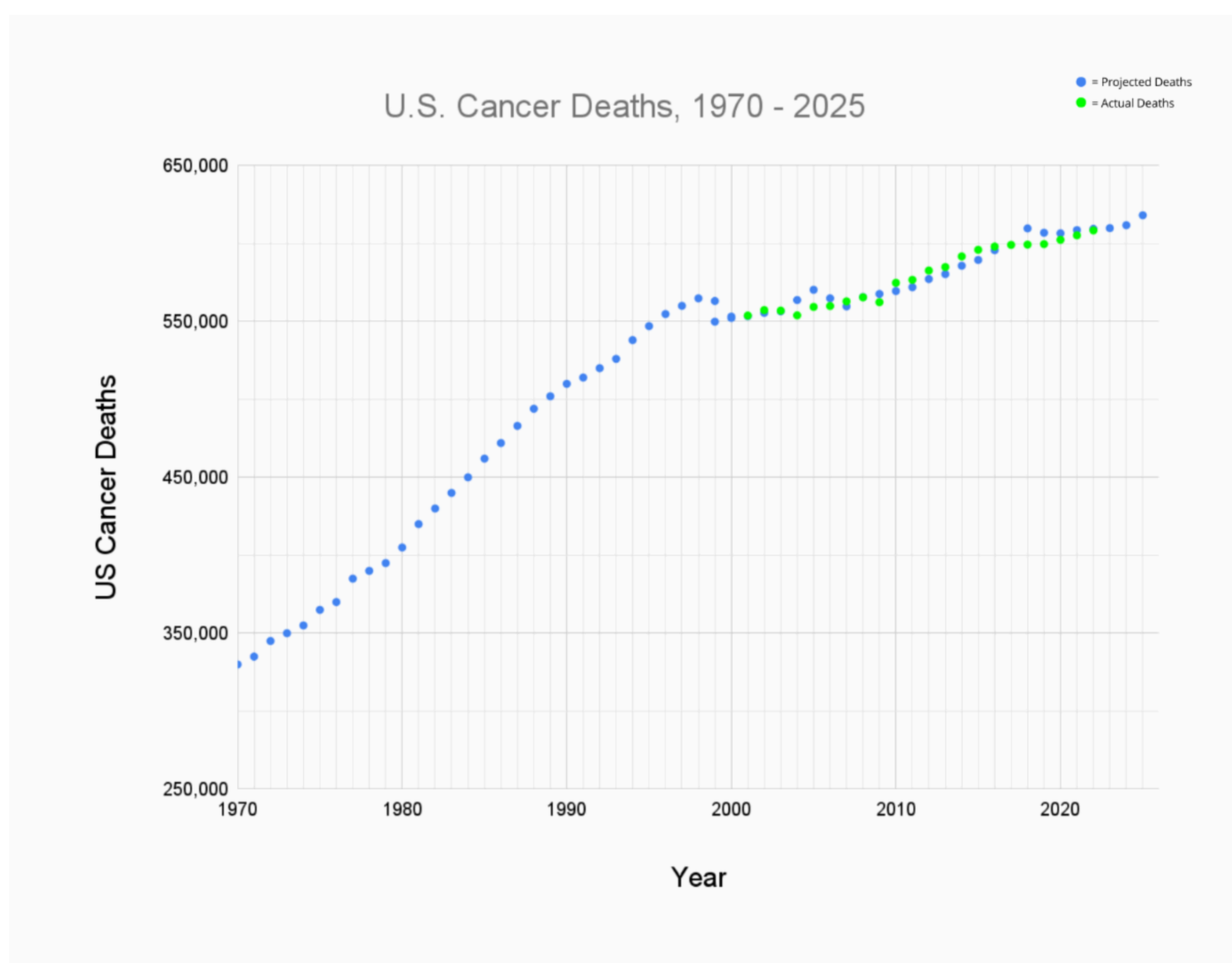


Strategic plan to substantially reduce cancer deaths - UPDATED

We have updated the Curing Cancer Network Strategic plan, which aims to substantially reduce cancer deaths in the United States from the 618,120 deaths projected for 2025 to 100,000 per year.

This strategic plan is essentially a management plan to use all of the possible treatment and public health approaches that may impact cancer deaths. We will not be successful by focusing on a silver bullet or other miracle treatment that might theoretically solve all of our problems. Instead, success will likely arise from an expanding number of modest improvements with occasional bursts of major advances.

Our specific strategies are detailed at pathologyoutlines.com/ccnstrategicplan.html.



Contributed by the [Curing Cancer Network](#) and [Nat Pernick, M.D.](#)

Cancer precursor lesions project

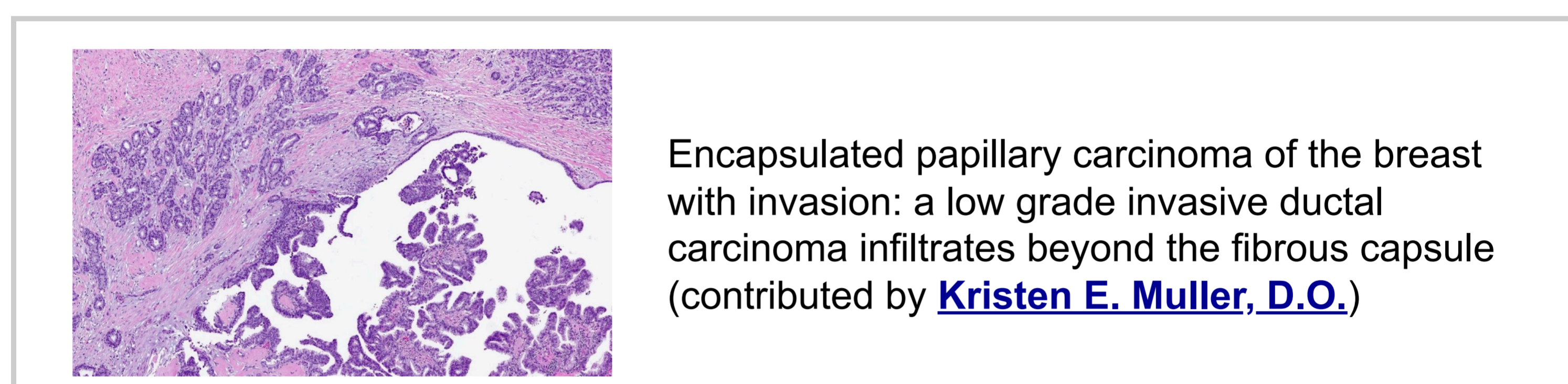
Breast cancers with precursor lesions (part 6d1)

Our cancer precursor project focuses on how different types of cancer arise. Part 6 focuses on breast cancer.

In this essay, we discuss three rare, invasive breast papillary tumors that appear to arise from or be associated with noninvasive but malignant tumors:

- Encapsulated papillary carcinoma with invasion
- Solid papillary carcinoma with invasion
- Intraductal papillary carcinoma with invasion

See the link to the full essay with images on our blog [here](#).

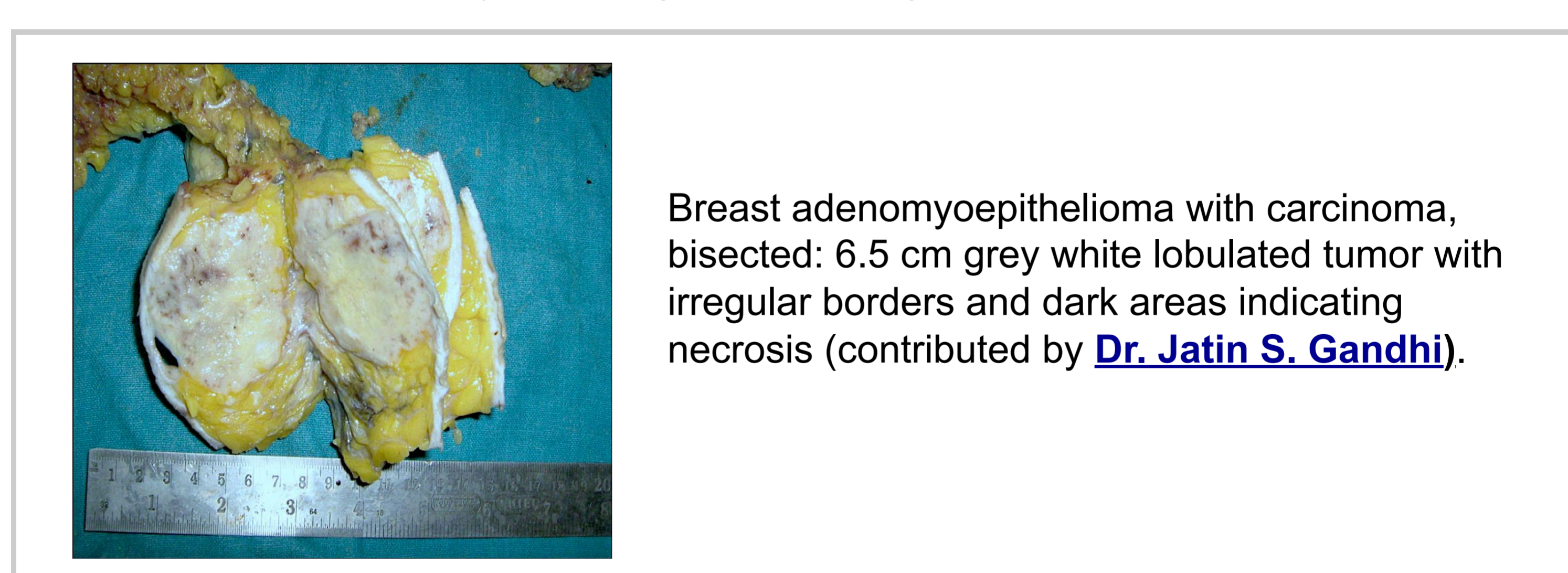


Breast cancers with precursor lesions (part 6f)

In this essay, we discuss:

- How do benign tumors arise in the breast?
- Why do these benign tumors occasionally transform into malignant tumors?
- Three breast cancers which arise from benign breast tumors:
 - Adenomyoepithelioma with carcinoma
 - Malignant granular cell tumor
 - Malignant phyllodes tumor

See the link to the full essay with images on our blog [here](#).

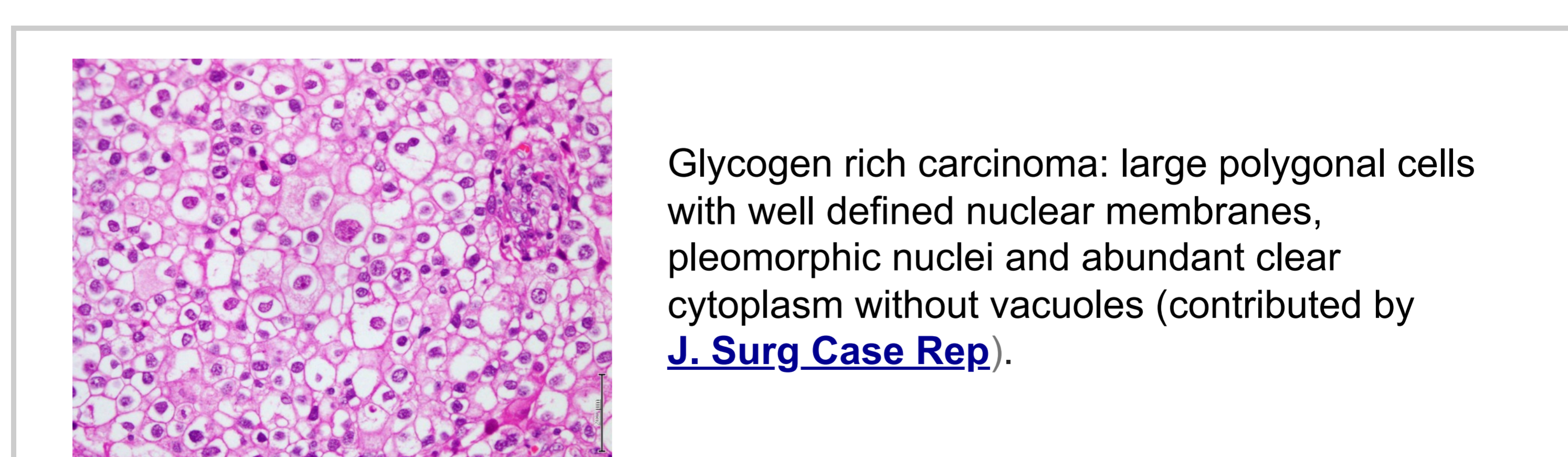


Breast cancers with precursor lesions (part 6g)

This essay, part 6g, discusses breast cancers without known premalignant or preinvasive precursors that have a distinct microscopic appearance of cells that are typically benign.

- Glycogen rich carcinoma
- Lipid rich carcinoma
- Oncocytic carcinoma
- Sebaceous carcinoma

See the link to the full essay with images on our blog [here](#).



Social media

Follow us on [LinkedIn](#). Twice a week we post interesting cancer related images of malignancies with diagnoses.

Newsletters

Click [here](#) to sign up for this newsletter. We list our prior newsletters on the [Newsletters page](#) as well as below.

Latest versions of our documents

[Strategic plan](#) (updated 16 February 2025)

[American Code Against Cancer](#)

(updated 23 July 2024)

Archives

- [January 2025](#)
- [October 2024](#)
- [July 2024](#)
- [April 2024](#)
- [February 2024](#)
- [December 2023](#)
- [October 2023](#)

- [August 2023](#)
- [May 2023](#)
- [March 2023](#)
- [January 2023](#)
- [December 2022](#)
- [October 2022](#)
- [July 2022](#)

STAY CONNECTED WITH THE CURING CANCER NETWORK

