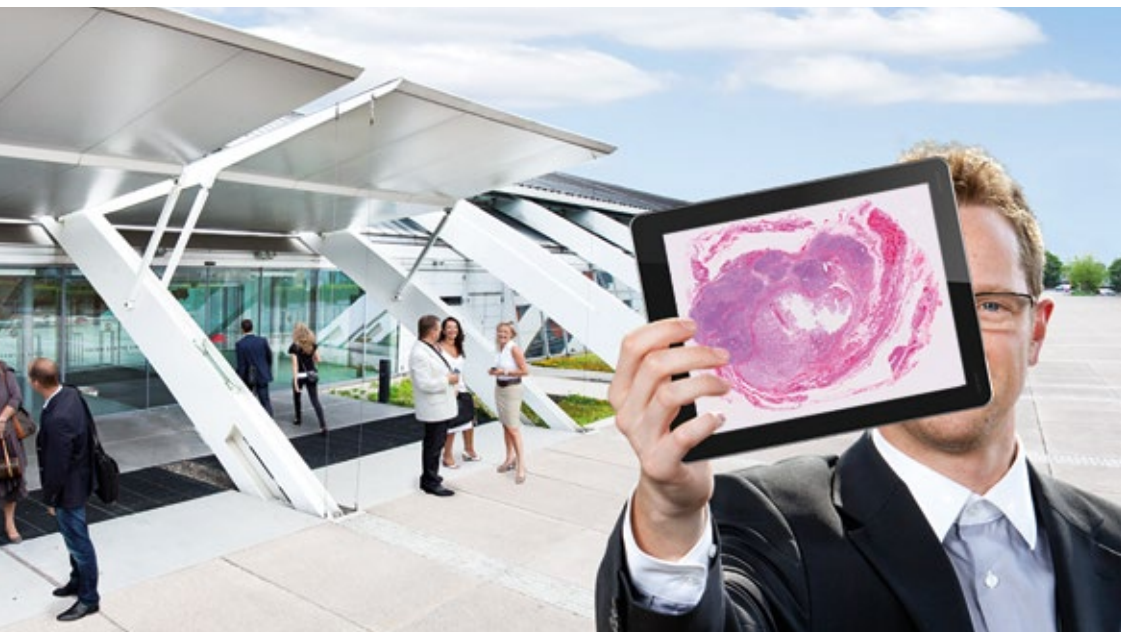


# Postgraduate Courses

## DIAGNOSTIC BREAST AND GYNECOLOGIC PATHOLOGY



**Blue Danube Airport, Linz, Austria**

**Course I: Breast Pathology, 12–14 October, 2016**

**Course II: Gynecologic Pathology, 17–19 October, 2016**

Course Director:

**Farid Moinfar, MD**

Department of Pathology

Hospital of the Sisters of Charity,

Linz, Austria



KRANKENHAUS  
BARMHERZIGE  
SCHWESTERN

*Linz*

EIN UNTERNEHMEN DER VINZENZ GRUPPE  
Medizin mit Qualität und Seele [www.vinzenzgruppe.at](http://www.vinzenzgruppe.at)

# OBJECTIVES OF THE COURSES

Two independent diagnostic courses will be provided:

**The first course** deals with **Diagnostic Breast Pathology** and will be held between 12<sup>th</sup> and 14<sup>th</sup> October, 2016. The participants will have the opportunity to review at least 60 digitalized cases (virtual microscopy) dealing with a variety of benign and malignant breast neoplasms and tumor-like lesions. Several common diagnostic problems including papillary neoplasms, intraductal proliferative lesions, variants of ductal and lobular intraepithelial neoplasias, and common as well as uncommon infiltrating carcinomas are included.

**The second course** deals with **Diagnostic Gynecologic Pathology** and will be held from 17<sup>th</sup> to 19<sup>th</sup> October, 2016. The participants will have the opportunity to review at least 60 digitalized cases (virtual microscopy) dealing with a variety of benign and malignant gynecologic tumors and tumor-like conditions. Several common as well as uncommon epithelial and non-epithelial tumors of the ovary, uterine, vagina, and vulva are included.

The digitalized cases will be provided for review (virtual microscopy) four weeks before the courses start. On each day of these two courses, at least 20 cases will be extensively discussed by an interactive approach. Particular attention will be paid to the diagnostic criteria with systematic analysis of differential diagnoses. Value and limitations of immunohistochemistry and molecular-genetic tools will be demonstrated and critically discussed. A comprehensive review and update of histopathology with discussion of clinical significance of benign, intraepithelial, and malignant breast and gynecological tumors will be provided. In addition, several lectures by experts in pathology, medical oncology, and surgery will be provided.

## PARTICIPANTS

These two intensive courses are designed for practicing pathologists as well as pathologists in training.

**Attendance for each course is limited to 80 participants.**

## COURSE DIRECTOR

### **Farid Moifar, MD**

Professor of Pathology and Chairman of the Department of Pathology,  
Hospital of the Sisters of Charity, Linz, Austria  
Adjunct Professor of Pathology, Medical University of Graz, Austria

## GUEST FACULTY

### **Fattaneh A. Tavassoli, MD**

Professor of Pathology, Department of Pathology,  
Yale University School of Medicine, New Haven, USA

## LOCATION / TIMETABLE / COURSE FEE

The two courses will be held at the Blue Danube Airport Linz.

Address: Blue Danube Airport  
Flughafenstraße 1, A-4063 Hörsching

**Course I:** Diagnostic Breast Pathology: 12–14, October, 2016

**Course II:** Diagnostic Gynecologic Pathology: 17–19, October, 2016

The course language is English.

The fee for course I (Breast Pathology) is 730,- Euro.

The fee for course II (Gynecologic Pathology) is 730,- Euro.

The fee for participants who attend both breast and gynecologic courses is 1.000,- Euro.

The course fee includes a comprehensive handout, lunches and social programs as well as daily transport between the 3 hotels (for more information please see “Accommodation”) and the course location at the Airport Linz.

## ACCREDITATION

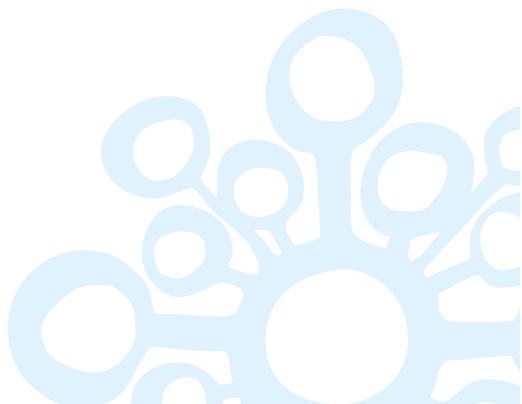
An application has been made to the EACCME for CME accreditation of this event.

## REGISTRATION / MORE INFORMATION

**We kindly ask for your online registration  
from 15<sup>th</sup> April to 1<sup>st</sup> October 2016:**  
[www.bhslinz.at/pathology2016](http://www.bhslinz.at/pathology2016)

### **For more information please contact:**

Hospital of the Sisters of Charity  
Alexandra Etlinger  
Seilerstätte 4, A-4010 Linz  
E-Mail: [alexandra.etlinger@bhs.at](mailto:alexandra.etlinger@bhs.at)





KRANKENHAUS  
BARMHERZIGE  
SCHWESTERN  
*Linz*



Medical University of Graz



**Farid Moinfar, MD**  
Hospital of the Sisters of Charity,  
Linz, Austria  
Department of Pathology, Medical  
University of Graz, Austria



**Fattaneh A. Tavassoli, MD**  
Yale University School of Medicine,  
New Haven, USA

## ACCOMMODATION

You may want to make a reservation at the following accommodations. **A daily transport will be provided between these 3 hotels and the course location at the Airport Linz.**

### 4\* Arcotel Nike Linz

Address: Untere Donaulände 9, A-4020 Linz  
[www.arcotelhotels.com/en/nike\\_hotel\\_linz](http://www.arcotelhotels.com/en/nike_hotel_linz)

### 4\* Spitz Hotel Linz

Address: Fiedlerstraße 6, A-4040 Linz  
[www.spitzhotel.at](http://www.spitzhotel.at)

### 3\* Hotel Ibis Linz City

Address: Kärntnerstr. 18-20, A-4020 Linz  
[www.ibis.com/en/hotel-1722-ibis-linz-city/index.shtml](http://www.ibis.com/en/hotel-1722-ibis-linz-city/index.shtml)

**You will get a special rate at each of these 3 hotels when you provide the key word “Pathology – Sisters of Charity Linz”.**

If you are attending both courses, you will find suggestions for sightseeing in Linz over the weekend on this website:

[www.linztourismus.at/discover-linz](http://www.linztourismus.at/discover-linz)

Picture copyright: Linz Tourismus

Krankenhaus der Barmherzigen Schwestern Linz  
Betriebsgesellschaft m.b.H. Seilerstätte 4 A-4010 Linz

TEL +43 732 7677-0 WEB [www.bhs-linz.at](http://www.bhs-linz.at)  
FAX +43 732 7677-7200 E-MAIL [office.linz@bhs.at](mailto:office.linz@bhs.at)